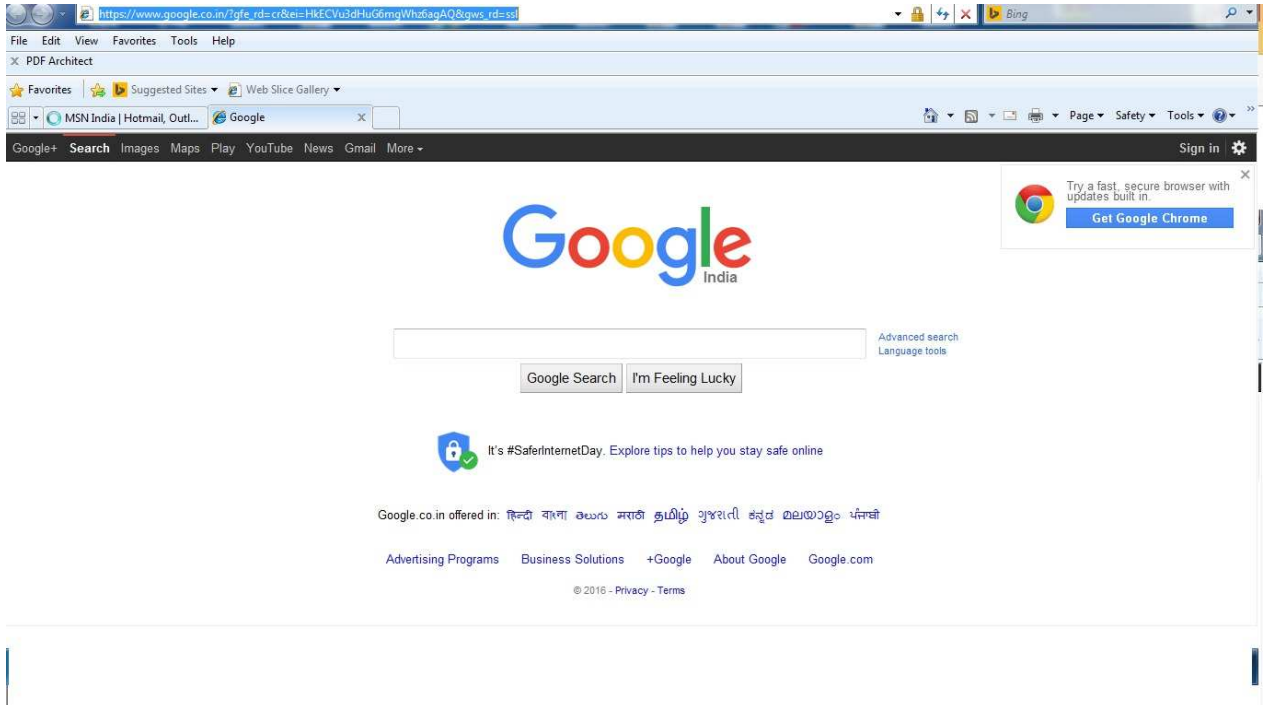


Regarding e-Office MTNL Modem Configuration Setting Step by Step:

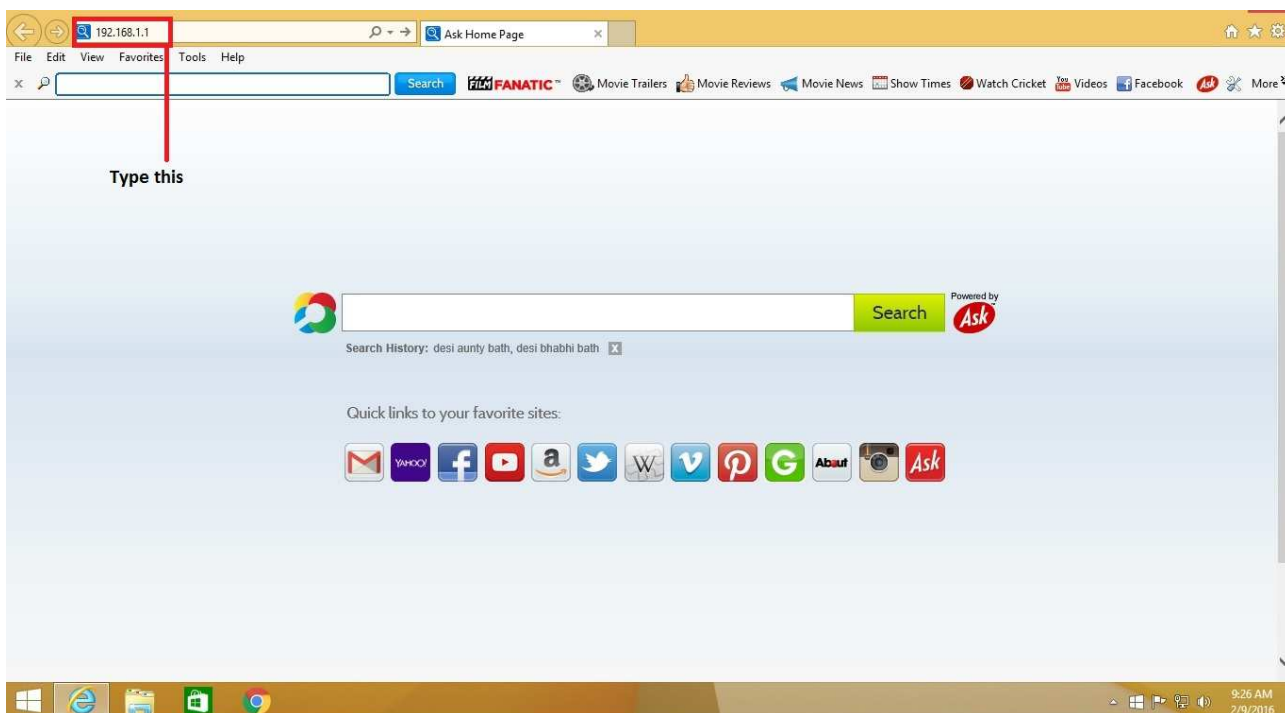
Step 1:

- Open Internet Explorer / Gogol chrome :



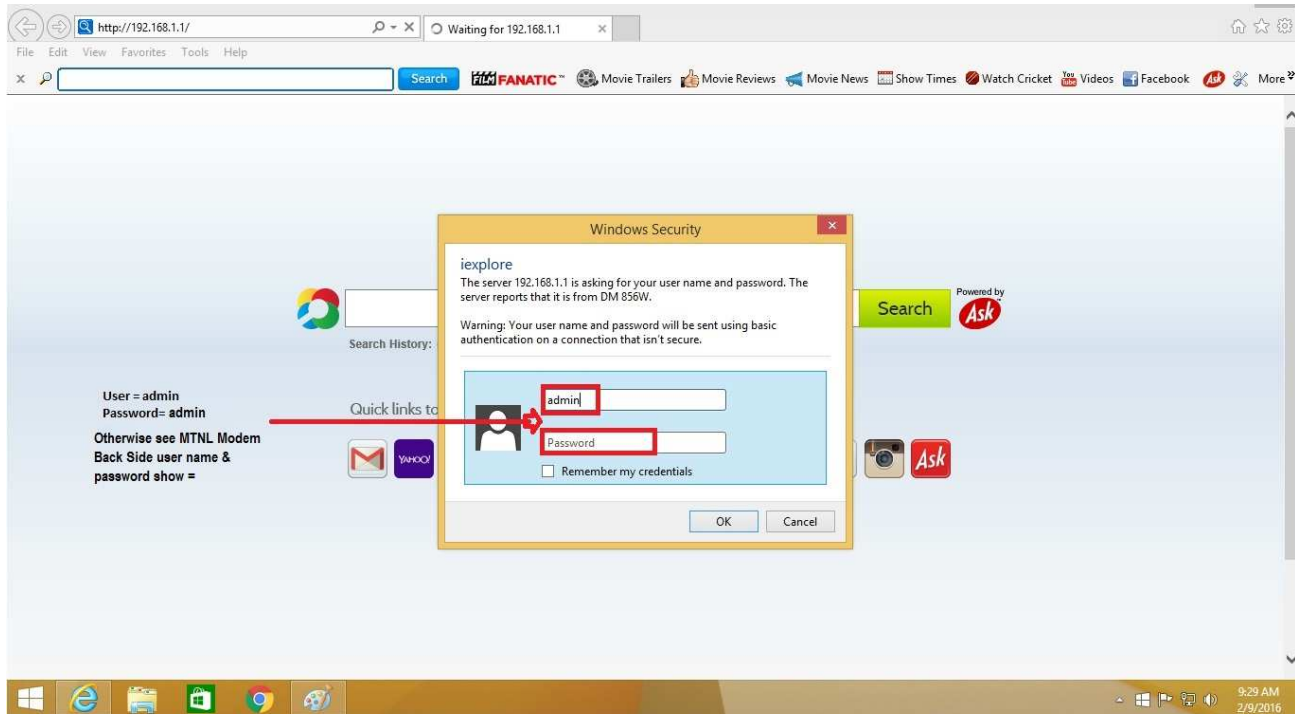
Step 2:

- Type 192.168.1.1 on internet explorer address bar than Enter:



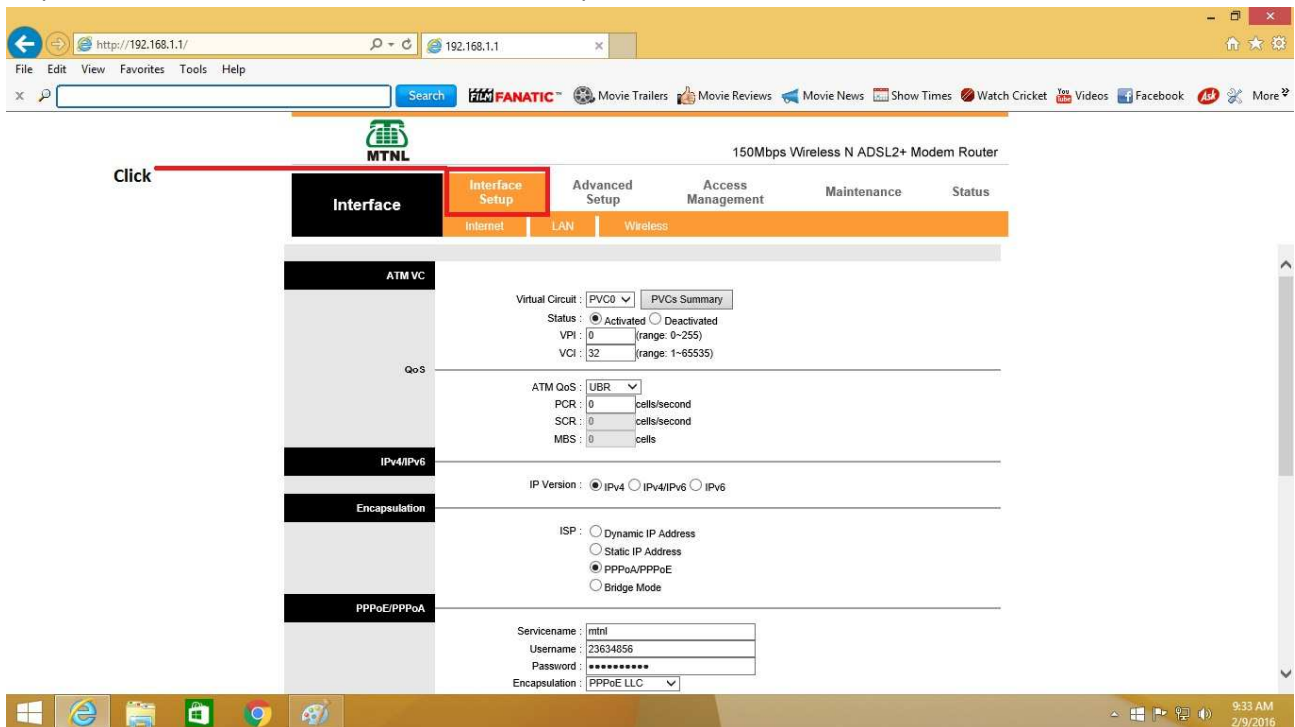
Step 3:

- : Open window than type User : admin and Default password : admin than OK
- Other wise See MTNL Modem Back Side Username & Password Show:12345 than OK



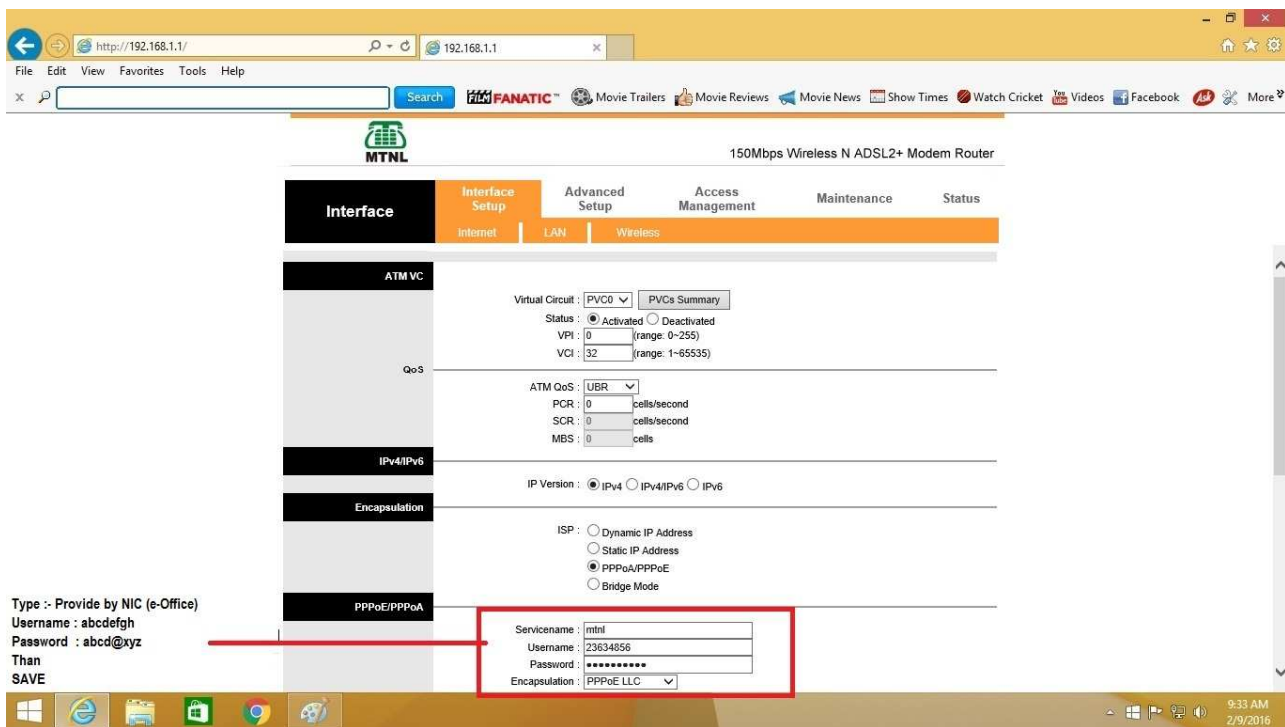
Step 4:

- : Open window than Select / Click Interface Setup:



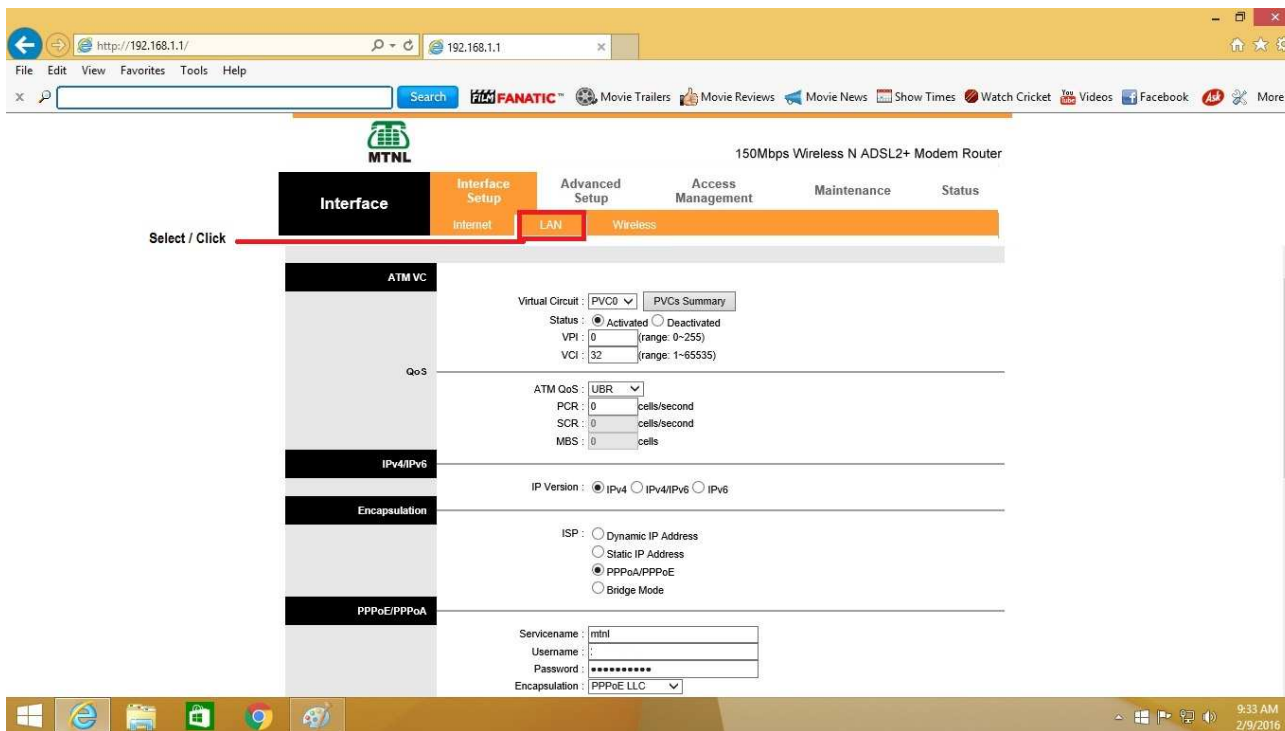
Step 5:

- Type Username xxxxxx and Password: xxxxxx Provide by NIC regarding e-Office: than SAVE

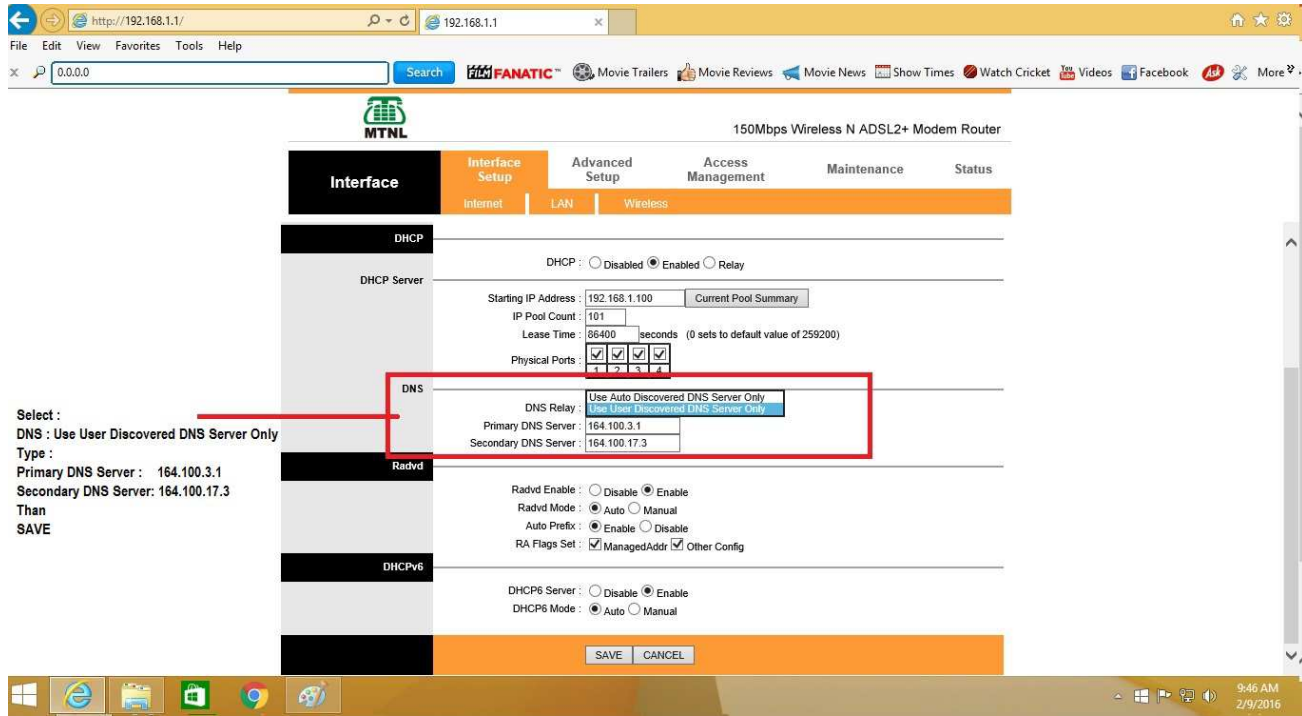


Step 6:

- Select /Click: LAN



- Step 7:
 - Select DNS Relay : Use User Discovered DNS Server.
 - type Primary DNS Server: 164.100.3.1
 - type Secondary DNS Server: 164.100.17.3 than
- SAVE



Step 8:

- Reboot / Restart your MTNL Modem after 10 Second.
- Than check through internet e-office mail.

Note:

NIC Broad Band Support Telephone Number : 011 23392411 & 23392184.

NOTE:

After Configure Above setting If Your Internet is not open Please Contact your nearby MTNL Office And ask to change your MTNL i knock port on (Errection/Huwai)